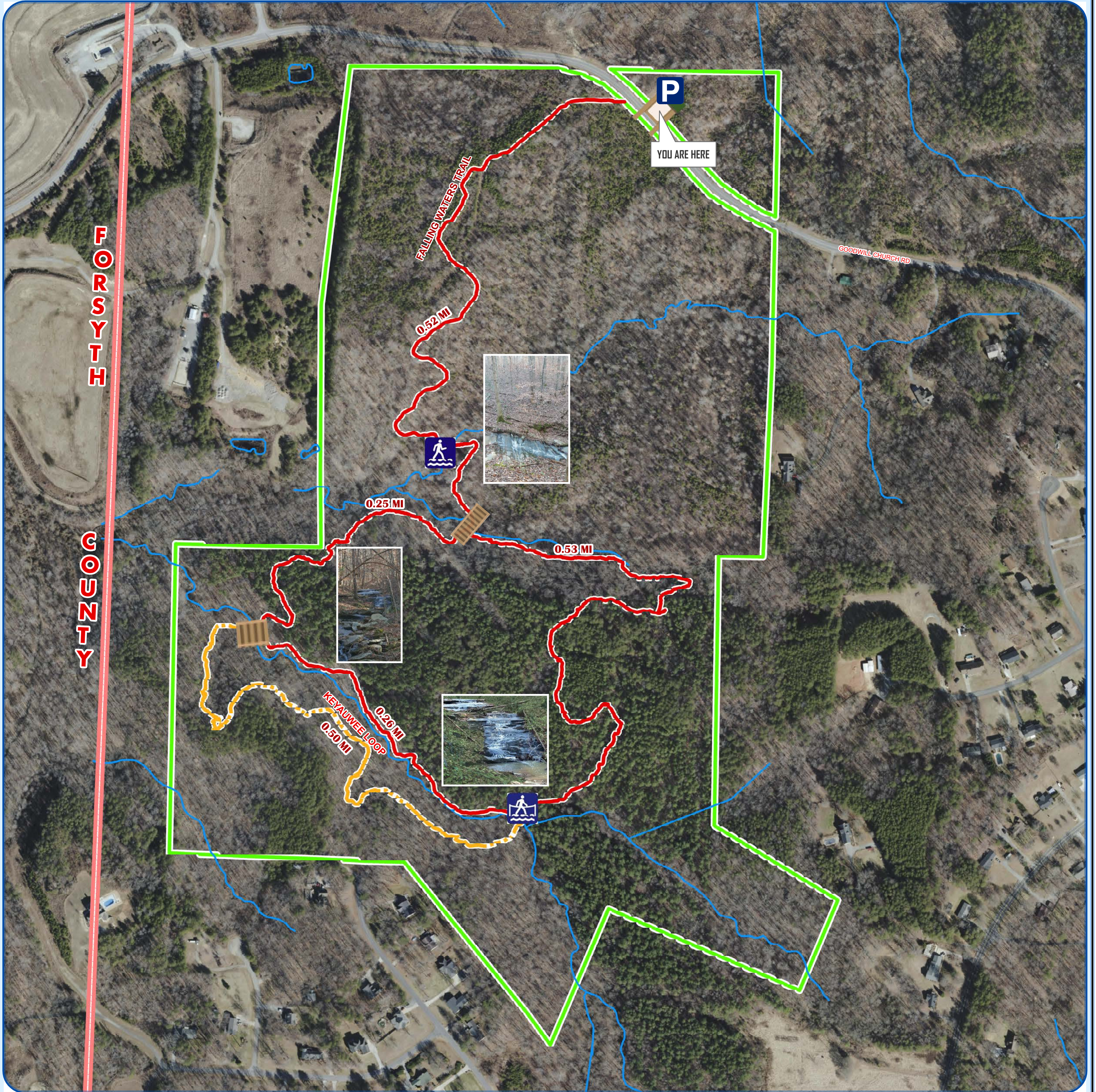


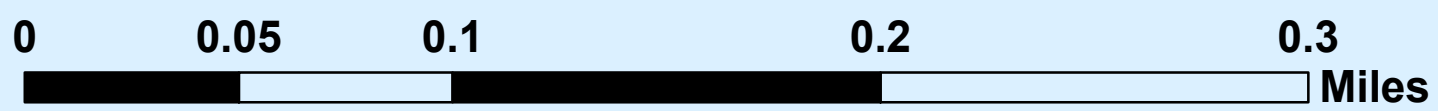
CASCADES PRESERVE



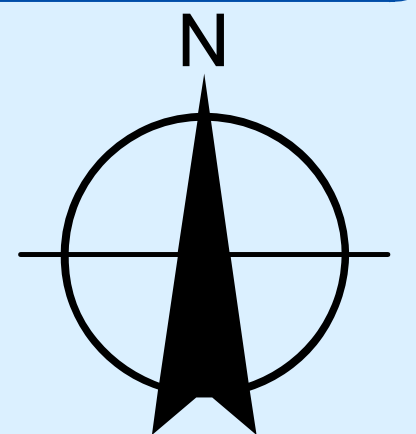
7359 GOODWILL CHURCH RD

LATITUDE: 36 11 41.5 N LONGITUDE: 80 01 50.8 W

(Level of Difficulty: MODERATE)



1 inch = 0.04 miles



Legend			
	PRESERVE BOUNDARY		KIOSK
	FALLING WATERS TRAIL - 1.53 mi		PARKING
	KEYAUWEE LOOP - 0.5 mi		ROCK CROSSING
	BRIDGE		ROPE CROSSING
	ROCK CROSSING		

CONTACT INFORMATION:
 In the event of an **EMERGENCY**: Call 911
 For more information about this Park or any of the other Guilford County Park: Call (336) 641 - 4751 or go to <http://www.myguilford.com/parks/>

SYMBOLS	
	Water
	Road
	Trail
	Boundary
	Other